



Perceilles

De la sécurité
à la performance

Plans d'épandage A3

Plan d'épandage du 16 mars 2017

GAEC DU S^T BERNARD

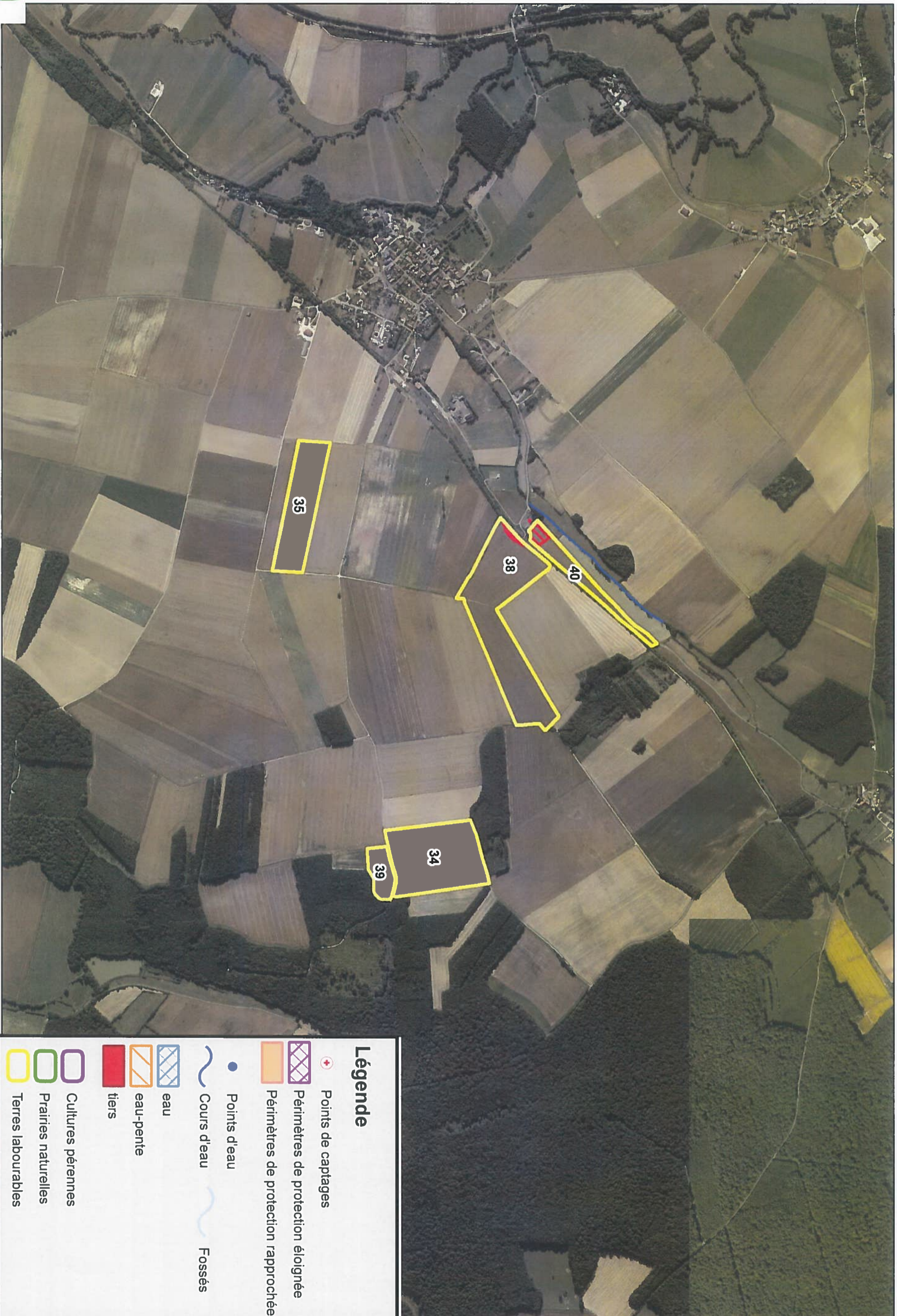
52160 VILLETORON

Conditions d'application













Régime : IC - Installation Classée

Effluent : Lisier

Méthode ou délai d'enfouissement : Enfoui ou
Non



Légende

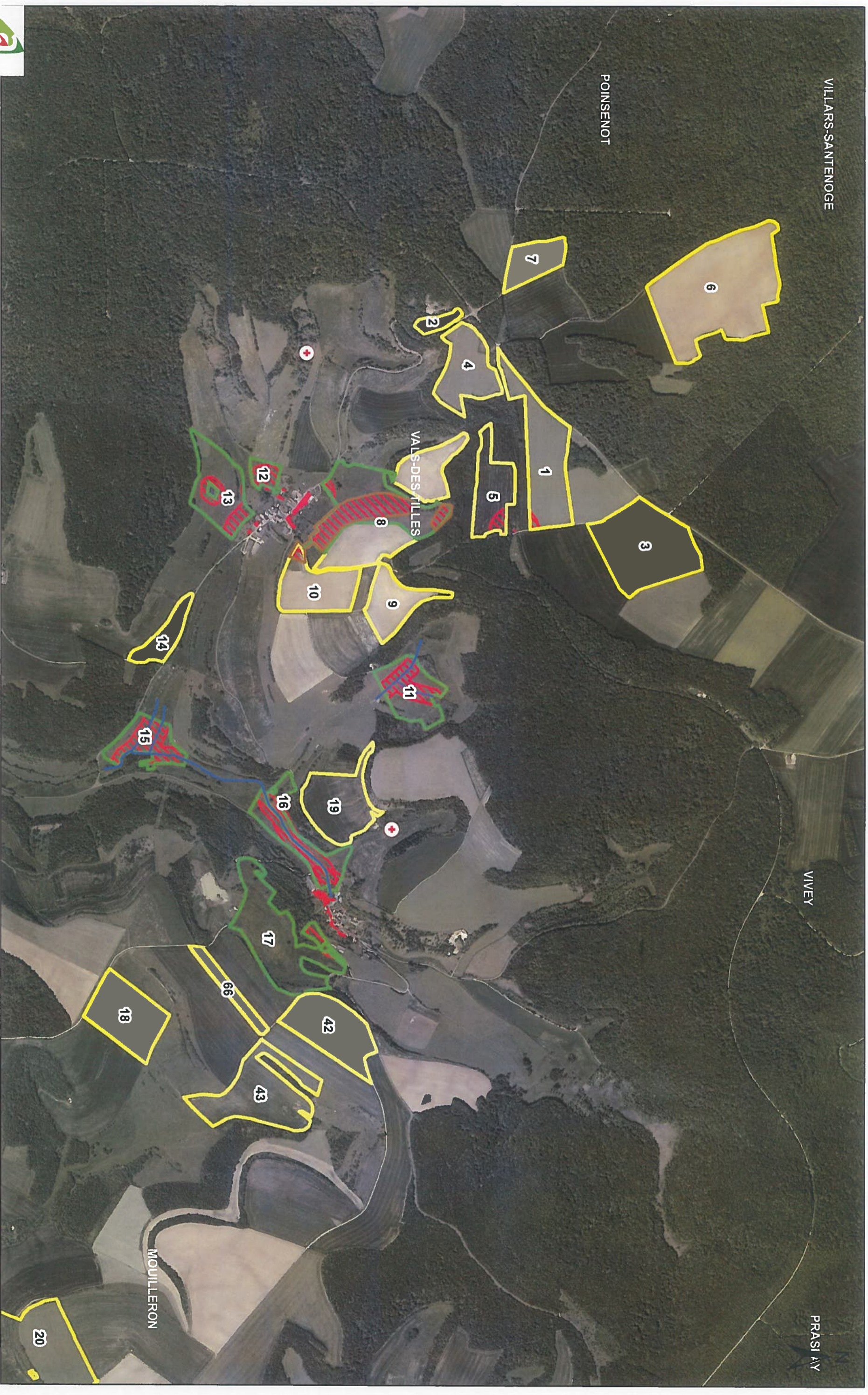
-  Points de captages
-  Périmètres de protection éloignée
-  Périmètres de protection rapprochée
-  Points d'eau
-  Cours d'eau
-  Fossés
-  eau
-  eau-pente
-  tiers
-  Cultures pérennes
-  Prairies naturelles
-  Terres labourables



Date de l'édition : 16 décembre 2014







VILLARS-SANTENOGE

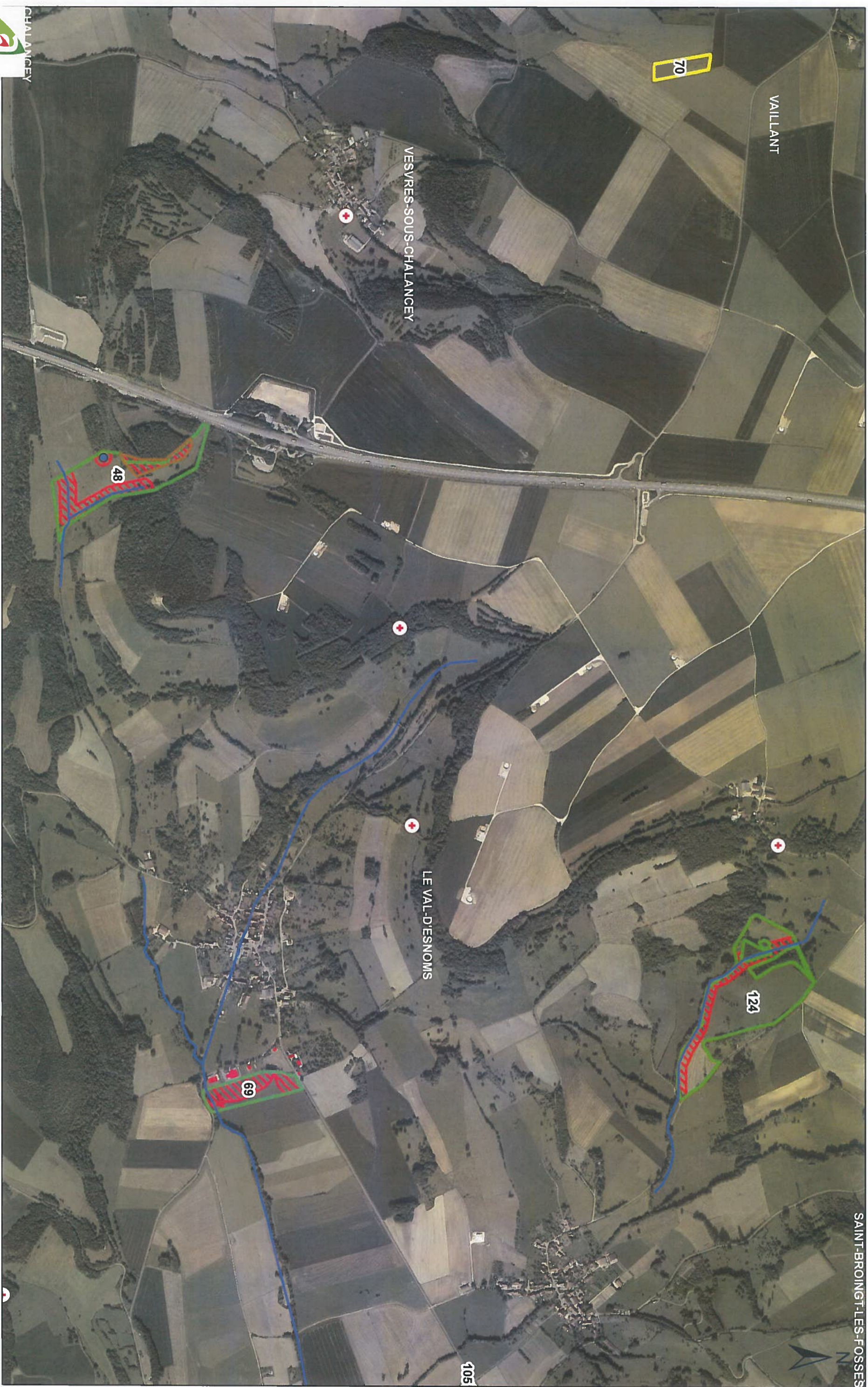
POINSENOT

VALS-DES-TILLES

VIVEY

MOULLERON

PRASI AY



CHALANCEY

VALLANT

VESVRES-SOUS-CHALANCEY

LE VAL-D'ESNOMS

SAINT-BRINGT-LES-FOSSES

70

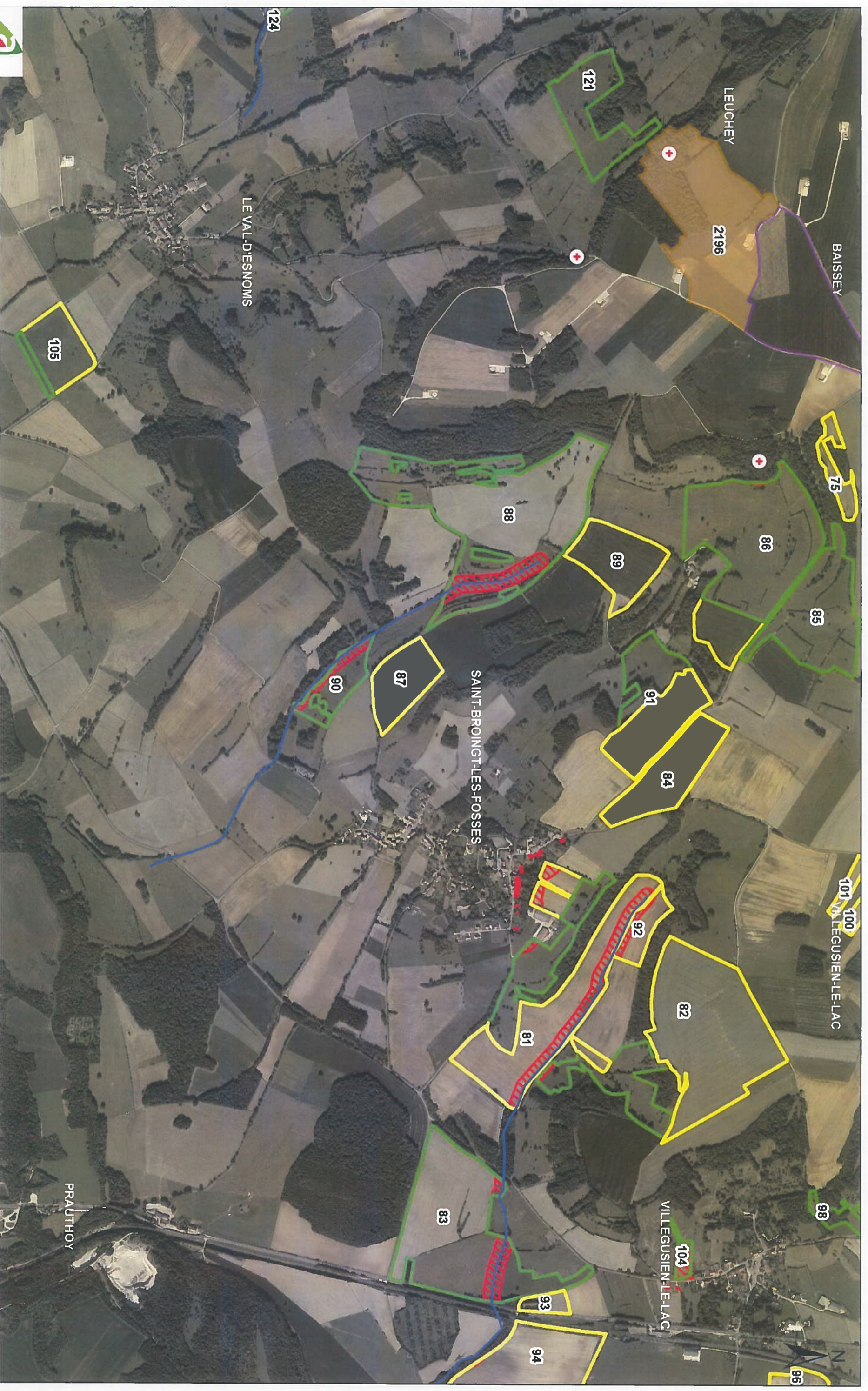
48

124

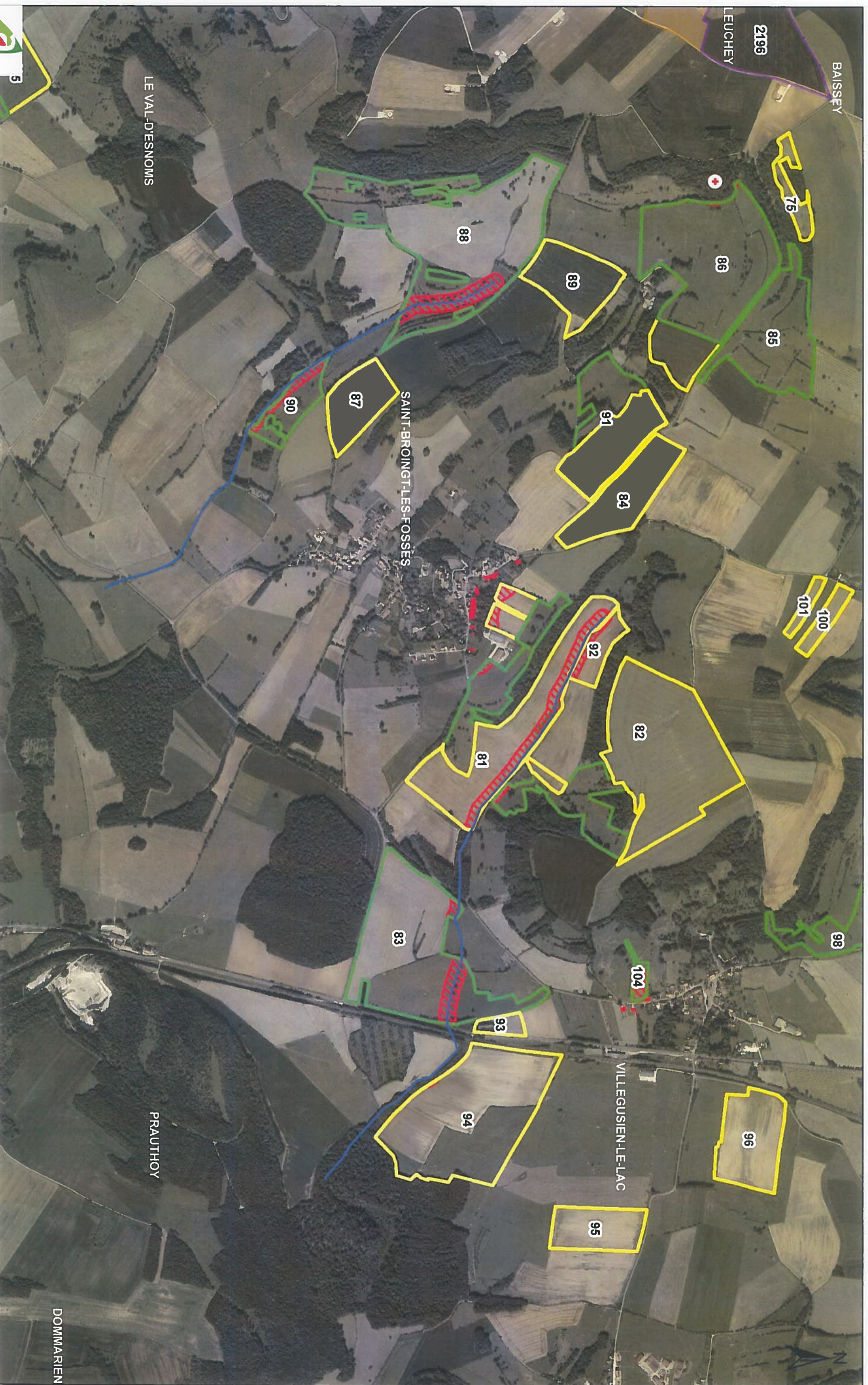
69

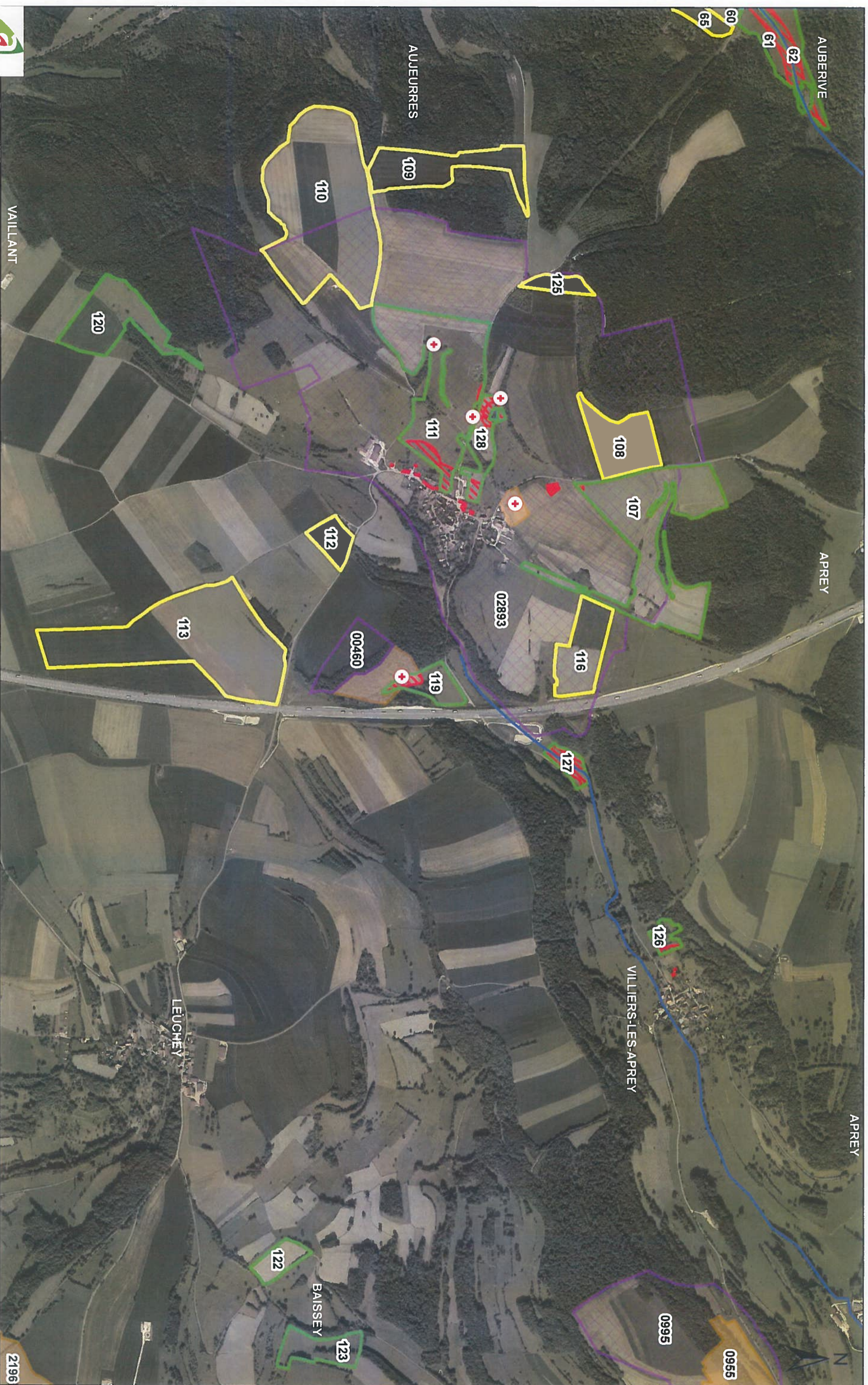
105

GAEC DU SAINT BERNARD











0834

PERROGNEY-LES-FONTAINES

APREY

106

FLAGEY

VILLIERS-LES-APREY

0995

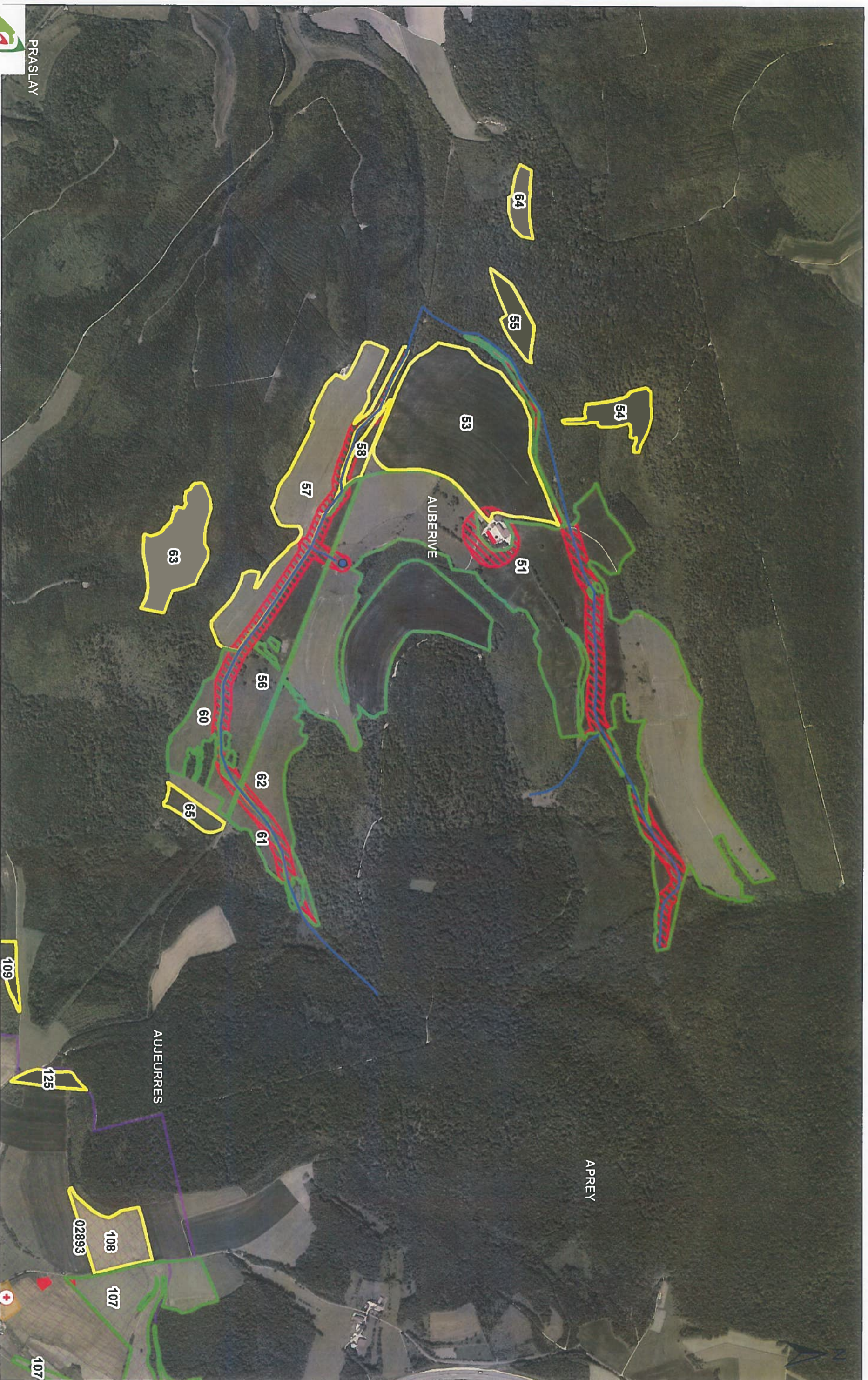
BAISSEY

ORCEVAUX

VERSEILLES-LE-BAS

VILLIERS-LES-APREY





PRASLAY

AUBERIVE

APREY

AUJOURRES

02893

108

107

107

